

# BUILT TOUGH TO HANDLE ANY JOB



Granby Industries' Light Commercial Tanks are robust and durable; two essential features required for your storage needs.



**Single wall tank:**



Granby Storage Tanks offers a complete range of aboveground light commercial tanks ranging in sizes from 570 L (125 IMP) to 4 550 L (1 000 IMP). Thanks to its 63+ years of engineering and manufacturing experience, when you choose Granby Storage Tanks for your fuel storage needs, you choose reliability, durability and peace of mind.

**Light Commercial Tanks: single wall, double wall, double bottom**

VOLUME (L,GAL)	TANK WEIGHT (Lb,Kg)	NOMINAL STEEL THK.	A	B	C	F	G	H	K	L
570,125	200,91	2.5 mm	49		30¼	39	30		12	18
1135,250	290,132	2.5 mm	60		38¼	47	30		15	21
1360,300	340,155	2.5 mm	72		38¼	47	30		15	21
1915,420	405,184	2.5 mm	60		50¼	59	30		15	21
2275,500	460,209	2.5 mm	72		50¼	59	30		15	21
3800,850	690,313	2.5 mm	120	25	50¼	59	25	50	15	21
4550,1000	795,360	2.5 mm	142	25	50¼	59	25	50	15	21

**Double wall tank with vacuum monitoring:**



Technical specifications: ASTM A-1011 steel, NPT female threaded openings, pressure tested at 5 PSIG, for use at atmospheric pressure only. Each double wall and double bottom tank is vacuum tested. All our tanks are tested and labeled in accordance with ULC-S601 standard for flammable and combustible liquids.

**EXTERNAL FINISH**

- Phosphate washed ; grey enamel painted
- Phosphate washed ; light grey or white, two-component polyurethane, UV-resistant paint
- 10 PLUS : sandblasted ; beige two-component polyurethane coating with top coat offering UV protection

**DOUBLE WALL MODEL**

DOUBLE WALL WITH VACUUM MONITORING SYSTEM



300-degree wrap for secondary wall

**DOUBLE BOTTOM MODEL**

DOUBLE BOTTOM WITH VISUAL LEAK DETECTION SYSTEM

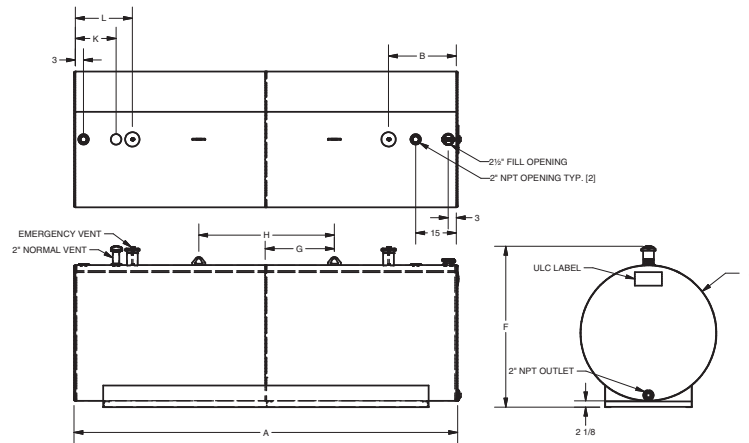
- Double bottom tank with visual leak detection system which indicates any leakage in the tanks' inner layer.

**ADDITIONAL OPTION**

Spill Box (removable) - Overfill Vent Alarm

Level Gauge - Fill and Vent Caps

**Double bottom tank with visual monitoring:**



Up to 10-year warranty against manufacturing defects \*

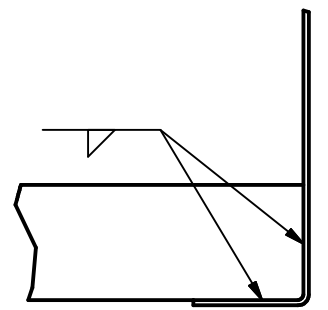
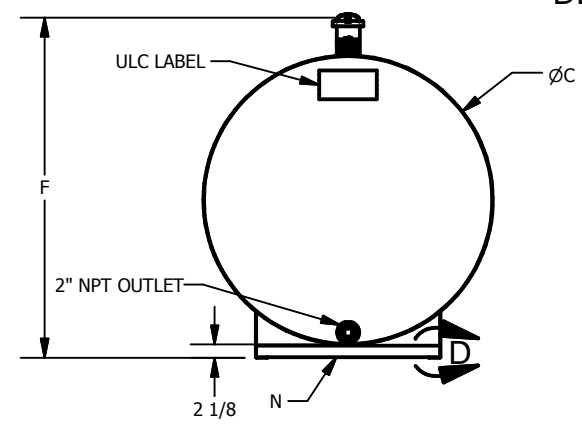
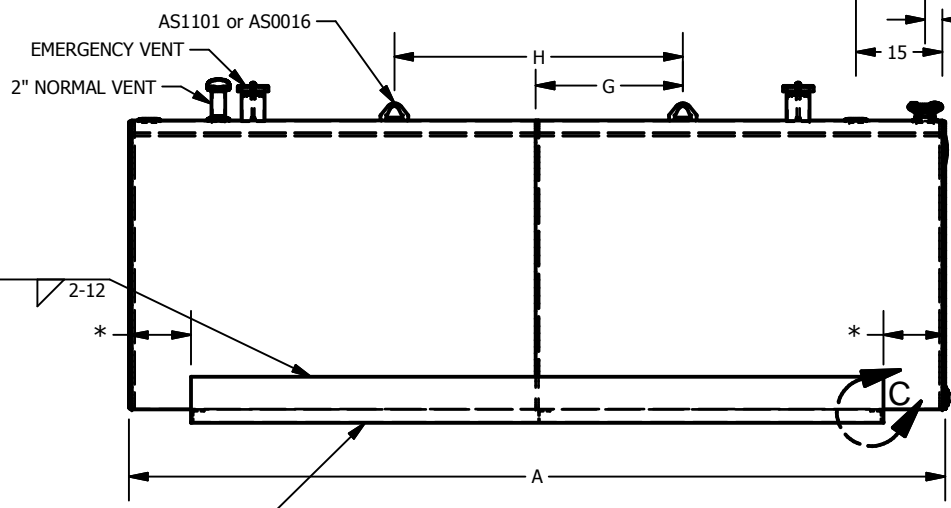
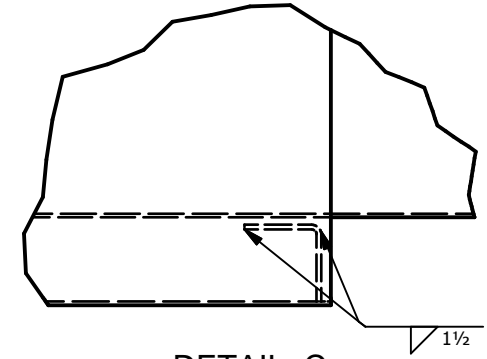
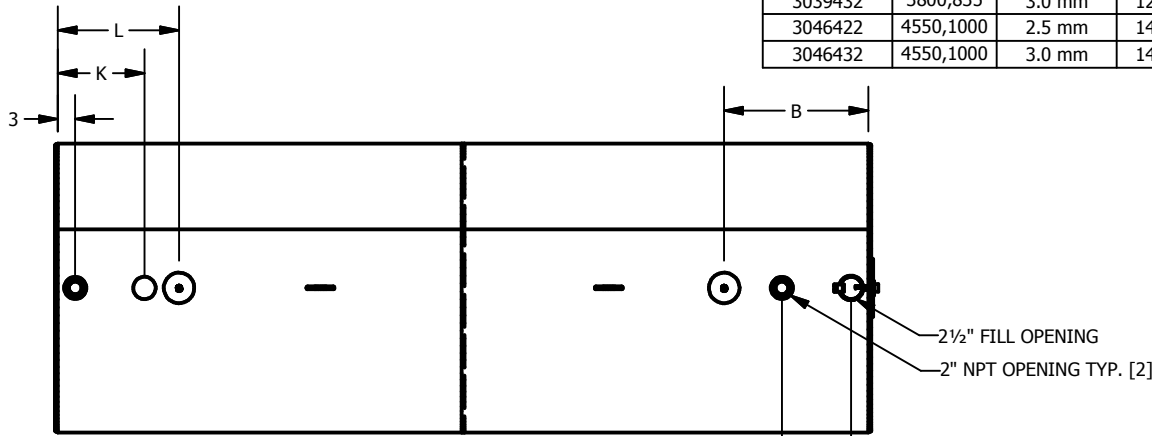


**POLYURETHANE COATING 10-YEAR WARRANTY**

10-year warranty against perforation from external corrosion \*

\* Please refer to Warranty Certificate for details.

PRODUCT #	VOLUME (L,GAL)	NOMINAL STEEL THK.	A	B	C	F	G	H	K	L	M	N
3006422	570,125	2.5 mm	49		30¼	39	0		12	18	AS07122ET	AS07008ET
3011422	1135,250	2.5 mm	60		38¼	47	0		15	21	AS07122ET	AS07009ET
3014422	1360,300	2.5 mm	72		38¼	47	0		15	21	AS07153ET	AS07010ET
3020423	1915,420	2.5 mm	60		50¼	59	0		15	21	AS07122ET	AS07013ET
3023424	2275,500	2.5 mm	72		50¼	59	0		15	21	AS07153ET	AS07013ET
3039422	3800,835	2.5 mm	120	25	50¼	59	25	50	15	21	AS07274ET	AS07013ET
3039432	3800,835	3.0 mm	120	25	50¼	59	25	50	15	21	AS07274ET	AS07013ET
3046422	4550,1000	2.5 mm	142	25	50¼	59	25	50	15	21	AS07304ET	AS07013ET
3046432	4550,1000	3.0 mm	142	25	50¼	59	25	50	15	21	AS07304ET	AS07013ET



\* : Equal distance

Ce dessin est la propriété exclusive de Industries Granby, SEC. Aucune partie de ce dessin ne peut être utilisée ou reproduite sans sa permission écrite.  
This drawing is the exclusive property of Granby Industries LP. No part of this drawing may be used or reproduced in any manner without its written permission.

<b>TOLÉRANCES LINÉAIRES, LINEAR STD TOLERANCES</b> 0 OR FRAC. (X/X) -> ±0.5"    0.00 -> ±0.125" 0.0 -> ±0.25"    0.000 -> ±0.0625"		Description de la révision / Revision description		<b>Industries Granby S.E.C.,</b> <b>Granby Industries L.P.</b> © 2011 Industries Granby, SEC. Granby Industries LP	
<b>TOLÉRANCES ANGULAIRES, ANGULAR STD TOLERANCES</b> 0 -> ± 2 DEG. 0.0 -> ± 0.5 DEG.    0.00 -> ± 0.1 DEG.		Dessiné par / Drawn by <b>E Bourassa</b> 2011-12-19		Format / Size    No de la pièce / Part no.    REV <b>A</b> <b>SI0068</b> <b>C.</b>	
Les soudures doivent respecter la spécification SI-0039. Tank welds must respect SI-0039 specifications.		Approuvé par / Approved by: <b>E Bourassa</b> 2011-12-19		Description / Title <b>GENERIC DRAWING FOR CYLINDRICAL HORIZONTAL SINGLE WALLED ULC-S601 UTILITY TANKS</b>	
Matériau / Material :		Unités / Units    Echelle / Scale    Feuille / Sheet <b>INCHES</b> <b>.03 : 1</b> <b>1 / 1</b>			