



Product Shown
RF-20-01-U

About the S Series

The Retrofit S Series is used for internal, one-sided repairs to eliminate continuous leak points caused by degraded flexible entry boots in singlewall sumps. Retrofit S fitting kits are universal for round or flat sump walls and the split design doesn't require excavation or disconnecting pipe. Models available for size-over-size, coaxial FRP, & rigid conduit. Quality FRP construction provides long term compliance solutions.

Bravo Solution Center

Call or Text (323) 541-3851
orders@sbravo.com

SIZES

- $\frac{3}{4}$ " – 4" standard

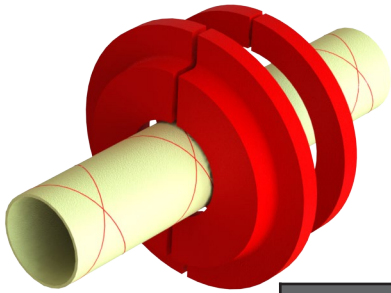
MATERIAL

- Tank-spec fiberglass

SPECIFICATIONS

- No need to break concrete or disconnect pipe
- For flat or round walls
- Accommodates extreme angles
- 30-year corrosion warranty
- UL2447 Listed





Retrofit Split FRP Retrofit Entry Fittings for Rigid Pipe, Round or Flat Singlewall FRP Sumps (RF EPOXY REQ'D)

Pipe Type	Part #	Description	RF EPOXY REQ'D Qty	Flange Diameter
1/2" conduit 5" flange	RF-05-01-U	1/2" conduit split, round or flat sump wall	EP100RF	5"
3/4" conduit 5" flange	RF-07-01-U	3/4" conduit split, round or flat sump wall	EP100RF	5"
1" conduit 5" flange	RF-10-01-U	1" conduit split, round or flat sump wall	EP100RF	5"
1/2" conduit 5" flange	RF-05-02-U	1/2" conduit, round or flat sump wall	EP100RF	5"
3/4" conduit 7" flange	RF-07-02-U	3/4" conduit 7" flange, split, round or flat sump wall	EP100RF	7"
1" conduit 7" flange	RF-10-02-U	1" conduit 7" flange, split, round or flat sump wall	EP100RF	7"
2" FRP 7" flange	RF-20-01-U	2" FRP 7" flange, split, round or flat sump wall	EP100RF (X2)	7"
3" FRP 7" flange	RF-30-01-U	3" FRP 7" flange, split, round or flat sump wall	EP100RF (X2)	7"
4" FRP 8" flange	RF-40-01-U	4" FRP 8" flange, split, round or flat sump wall	EP100RF (X2)	8"
6" FRP 11" flange	RF-60-01-U	6" FRP 11" flange, split, round or flat sump wall	EP100RF (X4)	11"
2" FRP 9" flange	RF-20-02-U	2" FRP 9" flange, split, round or flat sump wall	EP100RF (X2)	9"
3" FRP 9" flange	RF-30-02-U	3" FRP 9" flange, split, round or flat sump wall	EP100RF (X2)	9"
2" LCX 7" flange	RF-20L-01-U	2" LCX 7" flange, split, round or flat sump wall	EP100RF (X2)	7"
3" LCX 7" flange	RF-30L-01-U	3" LCX 7" flange, split, round or flat sump wall	EP100RF (X2)	7"
4" LCX 8" flange	RF-40L-01-U	4" LCX 8" flange, split, round or flat sump wall	EP100RF (X2)	8"
2" LCX 9" flange	RF-20L-02-U	2" LCX 9" flange, split, round or flat sump wall	EP100RF (X2)	9"
3" LCX 9" flange	RF-30L-02-U	3" LCX 9" flange, split, round or flat sump wall	EP100RF (X2)	9"