



Product Shown
RF-20-05-F

About the INR Series

The INR Series is used for internal, one-sided repairs to eliminate continuous leak points caused by degraded studded flexible entry boots in doublewall sumps. It repairs both interior and exterior leaks without excavation. The split design doesn't require disconnecting pipe. Models available for all common FRP piping and rigid conduit. Quality FRP construction provides long term compliance solutions.

SIZES

- 3/4" -4"

MATERIAL

- Tank-Spec Fiberglass

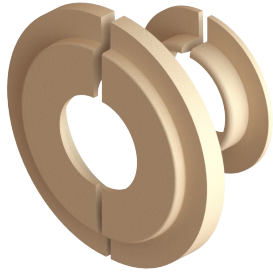
SPECIFICATIONS

- No need to break concrete or disconnect pipe
- Models available for flat or round walls
- 30-year warranty
- Installation corrects both interior and exterior wall leaks
- AB2481 compliant
- UL2447 Listed

Bravo Solution Center

Call or Text (323) 541-3851
orders@sbravo.com





INR Series Interior Installation Split FRP Retrofit Entry Fittings for Rigid Pipe Flat Doublewall FRP Sumps; Universal Replacement (not Kwik-Fit) (No Excavation)

Pipe Type	Part #	Description	EPOXY REQ'D Qty	Flange Diameter
3/4" galvanized conduit	RF-07-05-F	3/4" galvanized, interior installation split for flat doublewall sumps	EP100RF (X2)	7"
1" galvanized conduit	RF-07R-05-F	1" galvanized, interior installation split for flat doublewall sumps	EP100RF (X2)	7"
3/4" Rob Roy conduit	RF-10-05-F	3/4" Rob Roy, interior installation split for flat doublewall sumps	EP100RF (X2)	7"
1" Rob Roy conduit	RF-10R-05-F	1" Rob Roy, interior installation split for flat doublewall sumps	EP100RF (X2)	7"
2" FRP	RF-20-05-F	2" FRP interior installation split for flat doublewall sumps	EP100RF (X3)	9"
3" FRP	RF-30-05-F	3" FRP interior installation split for flat doublewall sumps	EP100RF (X3)	9"
4" FRP	RF-40-05-F	4" FRP interior installation split for flat doublewall sumps	EP100RF (X3)	9"

INR Series Interior Installation Split FRP Retrofit Entry Fittings for Rigid Pipe Round Doublewall FRP Sumps; Universal Replacement (not Kwik-Fit)

Pipe Type	Part #	Description	EPOXY REQ'D Qty	Flange Diameter
3/4" galvanized conduit	RF-07-05-R	3/4" galvanized, interior installation split for flat doublewall sumps	EP100RF (X2)	7"
1" galvanized conduit	RF-10-05-R	1" galvanized, interior installation split for flat doublewall sumps	EP100RF (X2)	7"
3/4" Rob Roy conduit	RF-07R-05-R	3/4" Rob Roy, interior installation split for flat doublewall sumps	EP100RF (X2)	7"
1" Rob Roy conduit	RF-10R-05-R	1" Rob Roy, interior installation split for flat doublewall sumps	EP100RF (X2)	7"
2" FRP	RF-20-05-R	2" FRP interior installation split for flat doublewall sumps	EP100RF (X3)	9"
3" FRP	RF-30-05-R	3" FRP interior installation split for flat doublewall sumps	EP100RF (X3)	9"
4" FRP	RF-40-05-R	4" FRP interior installation split for flat doublewall sumps	EP100RF (X3)	9"