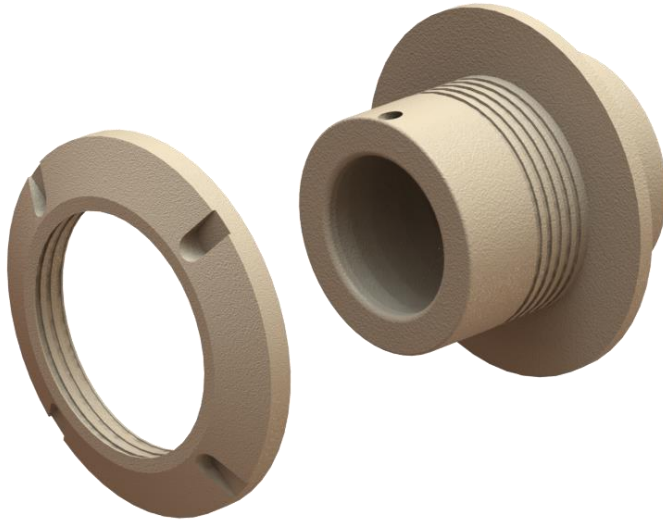


## NEW CONSTRUCTION FITTINGS



### Full-Body OmegaFlex

The Bravo full-body OmegaFlex fitting is compatible with both singlewall and doublewall monitored sumps.

Quality FRP construction and bonded installation provides an extremely long service life compared to flexible entry fittings.

The OmegaFlex pipe fitting can be completely assembled and then passed through the sump wall to the end connection. Which make this process simpler and saves time.

### SIZES

- 1, 1.5", 2" DoubleTrac

### MATERIAL

- Tank-spec fiberglass

### SPECIFICATIONS

Bond OmegaFlex pipe to the Bravo fitting by injecting **nylon adhesive NY-260**

Bravo EP100 Standard Epoxy adheres fitting to wall; singlewall has 1 injection port; doublewall has 2 injection ports and a tertiary seal on the exterior

Bonded FRP entry fitting, for long service life

For flat sumps only

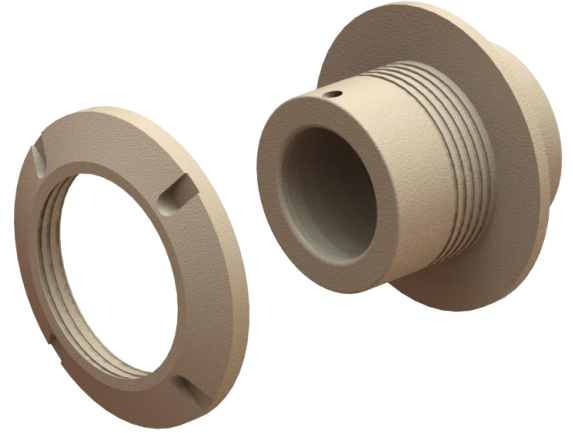
30-year corrosion warranty

UL2447 Listed



### NEW CONSTRUCTION FITTINGS

**Flat Wall Sumps Only**



### OmegaFlex fitting for Singlewall FRP Sumps

Pipe type	Part #	Description
OmegaFlex 1" DoubleTrac	F-10-OFLX-CR3.5	OmegaFlex 1" DoubleTrac, pass-through, adhesive req'd
OmegaFlex 1 1/2" DoubleTrac	F-15-OFLX-CR5	OmegaFlex 1-1/2" DoubleTrac, pass-through, adhesive req'd
OmegaFlex 2" DoubleTrac	F-20-OFLX-CR5	OmegaFlex 2" DoubleTrac, pass-through, adhesive req'd

### Omegaflex fitting for Doublewall FRP Sumps

Pipe type	Part #	Description
OmegaFlex 1" DoubleTrac	F-10-OFLX-D-CR3.5	OmegaFlex 1" DoubleTrac, pass-through, adhesive req'd
OmegaFlex 1 1/2" DoubleTrac	F-15-OFLX-D-CR5	OmegaFlex 1-1/2" DoubleTrac, pass-through, adhesive req'd
OmegaFlex 2" DoubleTrac	F-20-OFLX-D-CR5	OmegaFlex 2" DoubleTrac, pass-through, adhesive req'd

Doublewall fitting requires 3 adhesives

Bravo Epoxy EP100 to the wall, Nylon adhesive NY-260 to bond the pipe and Polysulfide adhesive PS-400