



Product Shown
F-30-F

About the FF Series Fittings

The Bravo FF Series flange by flange entry fitting for singlewall sumps is our most cost effective bonded FRP entry fitting. The FF is a pass-through entry fitting which brings the secondary pipe into the interior of the containment sump. A separate test reducer is needed to terminate from primary to secondary pipe. Models available for both size-over-size, coaxial FRP and rigid conduit. Quality FRP construction and bonded installation provides an extremely long service life compared to flexible entry fittings.

Bravo Solution Center

Call or Text (323) 541-3851
orders@sbravo.com

SIZES

- 3/4" galvanized or PVC coated conduit
- 1" galvanized or PVC coated conduit
- 2",3",4" fiberglass pipe including LCX coaxial
- 6" fiberglass pipe

MATERIAL

- Tank-spec fiberglass

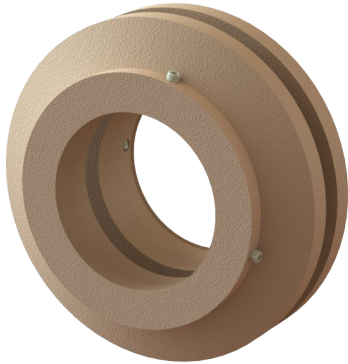
SPECIFICATIONS

- Bonded FRP entry fitting, for long service life
- Available for singlewall sumps
- Our most cost-effective bonded fitting
- 30-year corrosion warranty
- Easy installation
- Ideal for series piping applications
- Handles up to 5 degrees of angle
- UL2447 Listed



NEW CONSTRUCTION FITTINGS

Pass-Through Entry Fittings for Singlewall FRP Sumps Flat sump wall



Pipe type	Part #	Description
3/4" galvanized conduit	F-07-F	3/4" galvanized conduit, double-sided pass-through for flat walls, EPOXY REQ'D
3/4" PVCcoated conduit	F-07R-F	3/4" PVC coated conduit, double-sided pass-through for flat walls, EPOXYREQ'D
1" galvanized conduit	F-10-F	1" galvanized conduit, double-sided pass-through for flat walls, EPOXY REQ'D
1" PVCcoated conduit	F-10R-F	1" PVC coated conduit, double-sided pass-through for flat walls, EPOXYREQ'D
2" SW FRP	F-20-F	2" SW FRP pipe, double-sided pass-through for flat walls, EPOXY REQ'D
3" SW FRP	F-30-F	3" SW FRP pipe, double-sided pass-through for flat walls, EPOXY REQ'D
4" SW FRP	F-40-F	4" SW FRP pipe, double-sided pass-through for flat walls, EPOXY REQ'D
6" SW FRP	F-60-F	6" SW FRP pipe, double-sided pass-through for flat walls, EPOXY REQ'D
2" LCX FRP	F-20L-F	2" LCX pipe, double-sided pass-through for flat walls, EPOXYREQ'D
3" LCX FRP	F-30L-F	3" LCX pipe, double-sided pass-through for flat walls, EPOXYREQ'D
4" LCX FRP	F-40L-F	4" LCX pipe, double-sided pass-through for flat walls, EPOXYREQ'D

Pass-Through Entry Fittings for Singlewall FRP Sumps Round Sump Wall

Pipe type	Part #	Description
3/4" galvanized conduit	F-07-R	3/4" galvanized conduit, double-sided pass-through for round walls, EPOXY REQ'D
3/4" PVC coated conduit	F-07R-R	3/4" PVC coated conduit, double-sided pass-through for round walls, EPOXY REQ'D
1" galvanized conduit	F-10-R	1" galvanized conduit, double-sided pass-through for round walls, EPOXY REQ'D
1" PVC coated conduit	F-10R-R	1" PVC coated conduit, double-sided pass-through for round walls, EPOXY REQ'D
2" SW FRP	F-20-R	2" SW FRP pipe, double-sided pass-through for round walls, EPOXY REQ'D
3" SW FRP	F-30-R	3" SW FRP pipe, double-sided pass-through for round walls, EPOXY REQ'D
4" SW FRP	F-40-R	4" SW FRP pipe, double-sided pass-through for round walls, EPOXY REQ'D
6" SW FRP	F-60-R	6" SW FRP pipe, double-sided pass-through for round walls, EPOXY REQ'D
2" LCX FRP	F-20L-R	2" LCX pipe, double-sided pass-through for round walls, EPOXY REQ'D
3" LCX FRP	F-30L-R	3" LCX pipe, double-sided pass-through for round walls, EPOXY REQ'D
4" LCX FRP	F-40L-R	4" LCX pipe, double-sided pass-through for round walls, EPOXY REQ'D
	EP-100	Bravo 7 oz. standard epoxy kit; use with FRP, steel, PVC, and PVDF