

# Composite Manholes

## A0716 Composite Manholes

The Emco Wheaton A0716 Composite Manhole is designed with lightweight, slip-resistant composite manhole covers, using the latest manufacturing technology to ensure porosity-free molding, and compact, homogeneous distribution of reinforcing fiber. The covers also utilize a UV resistant treatment to protect against sun and weather damage.

Emco composite lids have a 36 month warranty. The ManholeTrak Warranty Tracking System is available on our website, [www.emcoretail.com](http://www.emcoretail.com).

- Meets AASHTO H20 Wheel Loading
- Non-skid surface
- Powder coated cast steel cam with o-ring
- Stainless steel fittings cam-lock fittings etched to show open and close directional arrows; field replaceable
- Stainless steel pry bar cleat
- Galvanized steel skirt (18")

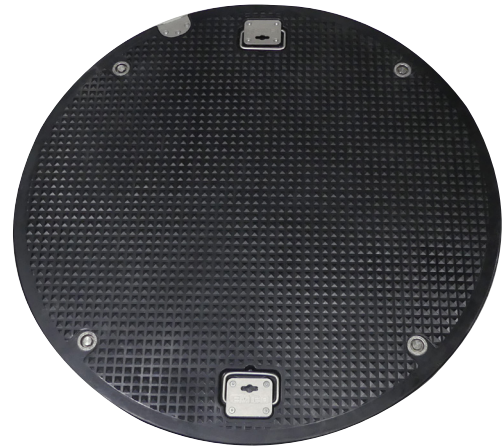


### 39", 42" & 44" Models

- Domed top construction to shed water
- Stainless steel dual handle - spring-loaded and key-lift
- Hot rolled steel skirt
- Concrete anchors



Serial Number



569427  
Euro Lift Handle

A0081-004CL  
Cam-Lock Wrench

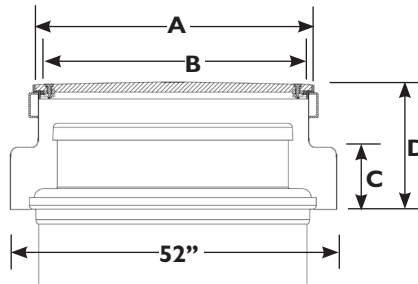
## Wedding Cake Assemblies

Installs over containment sump

Part Number	Lid Dim. A	Clear Hole Dim. B	Height C	Height D
A0716-042CW	43.75"	41.63"	10.10"	21.25"
A0716-042CDW*	43.75"	41.63"	10.10"	21.25"
A0716-044CW	44.25"	41.69"	10.10"	21.25"
A0716-044CDW*	44.25"	41.69"	10.10"	21.25"

\*Includes water-tight D-Seal

Add "S" suffix for stainless steel rim and skirt



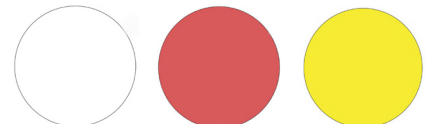
### All composite manholes are available with Type 304 stainless steel rim and skirt

Model Number	Style	Lid Dia. A	Overall Dia. B	Clear Hole C	Skirt ID D	Overall Ht. E
A0716-018SS	18" Lay-in	17.0"	17.6"	15.6"	15.9"	13.0"
A0716-039SS	39" Lay-in	39.5"	40.4"	37.8"	38.3"	13.0"
A0716-042SS	42" Lay-in	43.8"	44.6"	42.0"	42.5"	13.0"
A0716-044SS	44" Lay-in	44.3"	45.1"	42.5"	43.1"	13.0"

Cam-lock versions available - add a "C" to the end of the part number.

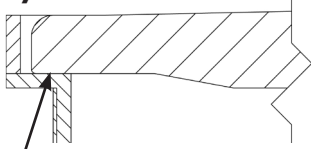
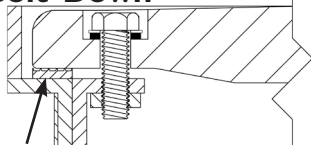
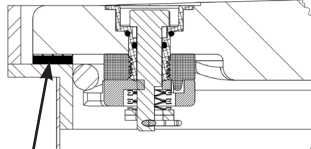
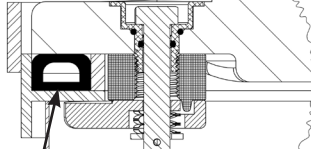
### 4 3/4" ID Tags

- 574044 White, Regular
- 574045 Red, Ultra
- 574046 Yellow, ULSD

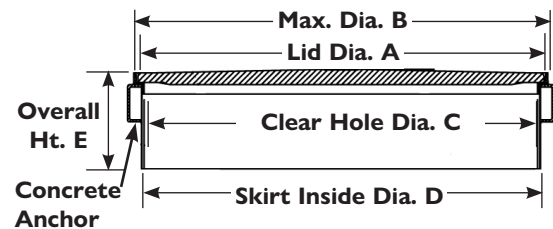


# Composite Manholes

## A0716 Composite Manholes

Seal Options	Model Number	Style	Lid Dia. A	Overall Dia. B	Clear Hole ID C	Skirt ID D	Overall Ht. E
<b>Lay-In</b>  No Seal	A0716-018	18" Lay-in	17.0"	17.8"	16.0"	17.0"	12.0"
	A0716-018L	18" Lid Only Lay-in	17.0"	--	--	--	--
	A0716-020	20" Lay-in	20.0"	20.75"	17.0"	17.5"	9.75"
	A0716-020LID	20" Lid Only Lay-in	20.0"	--	--	--	--
	* <b>A0716-039</b>	39" Lay-in	39.5"	40.4"	37.8"	38.3"	10.0"
	A0716-039LID	39" Lid Only Lay-in	39.5"	--	--	--	--
	* <b>A0716-042</b>	42" Lay-in	43.8"	44.6"	42.0"	42.5"	10.0"
A0716-042LID	42" Lid Only Lay-in	43.8"	--	--	--	--	
A0716-044	44" Lay-in	44.3"	45.1"	42.5"	43.1"	10.0"	
A0716-044LID	44" Lid Only Lay-in	44.3"	--	--	--	--	
<b>Bolt-Down</b>  Ribbed Seal, Water-resistant	A0716-039B	39" Bolt-down	39.5"	40.4"	35.5"	38.3"	10.0"
	A0716-039BL	39" Lid Only Bolt-down	39.5"	--	--	--	--
	A0716-042B	42" Bolt-down	43.8"	44.6"	38.5"	42.5"	10.0"
	A0716-042BL	42" Lid Only Bolt-down	43.8"	--	--	--	--
	A0716-044B	44" Bolt-down	44.3"	45.1"	40.3"	43.1"	10.0"
	A0716-044BL	44" Lid Only Bolt-down	44.3"	--	--	--	--
<b>Cam-Lock</b>  Ribbed Seal, Water-resistant	A0716-018C	18" Cam Lock	17.0"	17.7"	15.1"	17.0"	12.0"
	A0716-018CV	18" Cam Lock White Lid	17.0"	17.7"	15.1"	17.0"	12.0"
	A0716-018CL	18" Lid Only Cam Lock	17.0"	--	--	--	--
	A0716-018CVL	18" Lid Only White Cam Lock	17.0"	--	--	--	--
	A0716-039C	39" Cam Lock	39.5"	40.4"	36.8"	38.3"	10.0"
	A0716-039CL	39" Lid Only Cam Lock	39.5"	--	--	--	--
	A0716-042C	42" Cam Lock	43.8"	44.6"	41.0"	42.5"	10.0"
	A0716-042CL	42" Lid Only Cam Lock	43.8"	--	--	--	--
	* <b>A0716-044C</b>	44" Cam Lock	44.3"	45.1"	41.5"	43.1"	10.0"
	A0716-044CL	44" Lid Only Cam Lock	44.3"	--	--	--	--
<b>Cam-Lock-D</b>  D-Seal, Water-tight	A0716-024CD	24" Cam Lock w/D-Seal	24.0"	29.5"	22.0"	25.4"	12.0"
	A0716-039CD	39" Cam Lock w/D-Seal	39.5"	40.4"	36.8"	38.3"	10.0"
	A0716-042CD	42" Cam Lock w/D-Seal	43.8"	44.6"	41.0"	42.5"	10.0"
	A0716-044CD	44" Cam Lock w/D-Seal	44.3"	45.1"	41.5"	43.1"	10.0"

\*Most common variant  
Custom skirt heights available upon request



### Replacement Parts

570897	Rib Seal, -018C
495157	Rib Seal, -039B, -039C
494988	Rib Seal, -042B, -042C, -044B, -044C
495561	D-Seal, -039CD
495562	D-Seal, -042CD, -044CD
494781K	Cam-Lock Assembly; -039C, -042C, -044C
494781LK	Cam-Lock-D Assembly; -039CD, -042CD, -044CD

### Composite Drop-In Replacement Lids for Competitors' Manholes

Emco	OPW	Franklin	Flexing	Morrison	Environ
A0716-020LID	101BG				
A0716-039E					WTM-3911
A0716-039LID	E00618	781-448-06		318L-3812ACC	
A0716-039M					
A0716-042LID			14U-4210C		
A0716-044LID	E00626	781-445-06			
A0716-044E					WTM-4511, WTM-4521
A0716-044M				318L-4412ACC	