

Filter Housing Specifications

Flow Rating:	950 gpm (3600 L/min) *
Inlet/Outlet Connection:	DN150 (2"-12" DIN)
Max. Operating Pressure:	150 psi (10 bar)
Max. Temperatures:	122°F (50°C)
Material Housing:	Stainless Steel
Differential Pressure Indicator:	Standard
Element Model:	E-HFFE

* Other available GPM's: 210, 320, 475 and 630.



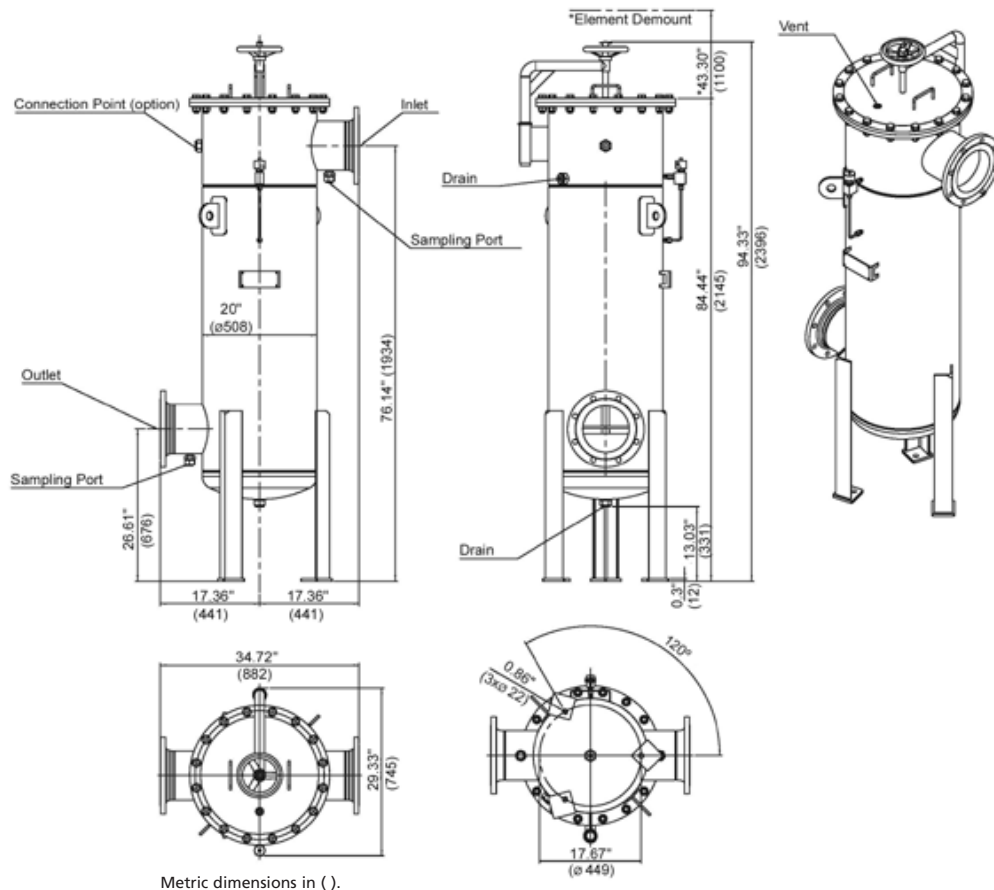
950 gpm
3600 lpm
150 psi
10 bar

Features and Benefits

- Excellent filtration performance in a single pass
- Low pressure loss due to innovative element technology
- Easy to service thanks to intelligent element design
- Easy to adapt to filter housings for the removal of the fine particles in diesel
- The high flow fuel filter is mainly used to filter low-viscosity fluids. It is especially suitable for applications with large amounts of dirt that need to be removed in just a single pass
- The filter elements used here ensure that both the required cleanliness and a long service life are achieved
- 10 micron rating is standard. Optional micron ratings: 3 and 5.

Model	GPM	# of Filter Elements
PHFF 950	950	8 pcs.

Dimensions PHFF 950



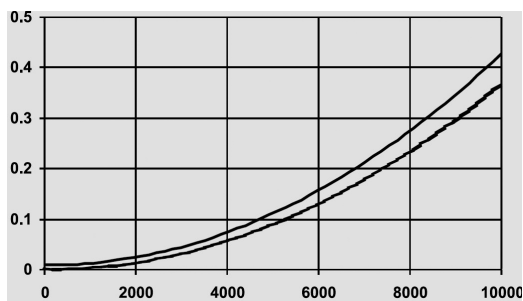
Filter Calculation

Filter Size (Model)	Maximum Flow Rate	Number of Filter Elements
PHFF 210	210 gpm	1 pc.
PHFF 320	320 gpm	3 pcs.
PHFF 475	475 gpm	4 pcs.
PHFF 635	635 gpm	5 pcs.
PHFF 950	950 gpm	8 pcs.

Housing Pressure Drop Graphs (Housing ΔP)

The lower curve applies to diesel at 20°C (the upper curve is for mineral oil with viscosity to 30 cSt for comparison).

PHFF 950



Filter Element Selection Coalescing Element Performance Information

Filter elements must be ordered separately and installed before initial operation on-site

Element	Pressure Side Coalescing
	Part No.
Filter Element 40"	E-HFFE