

PARTS LIST: ISO 246
DEF-N700 1/2" Series (DEF-425, DEF-450 & DEF-475)

When Ordering Parts
BE SURE TO SPECIFY COMPLETE MODEL NUMBER and SERIAL NUMBER OF REEL
USE PART NUMBER!

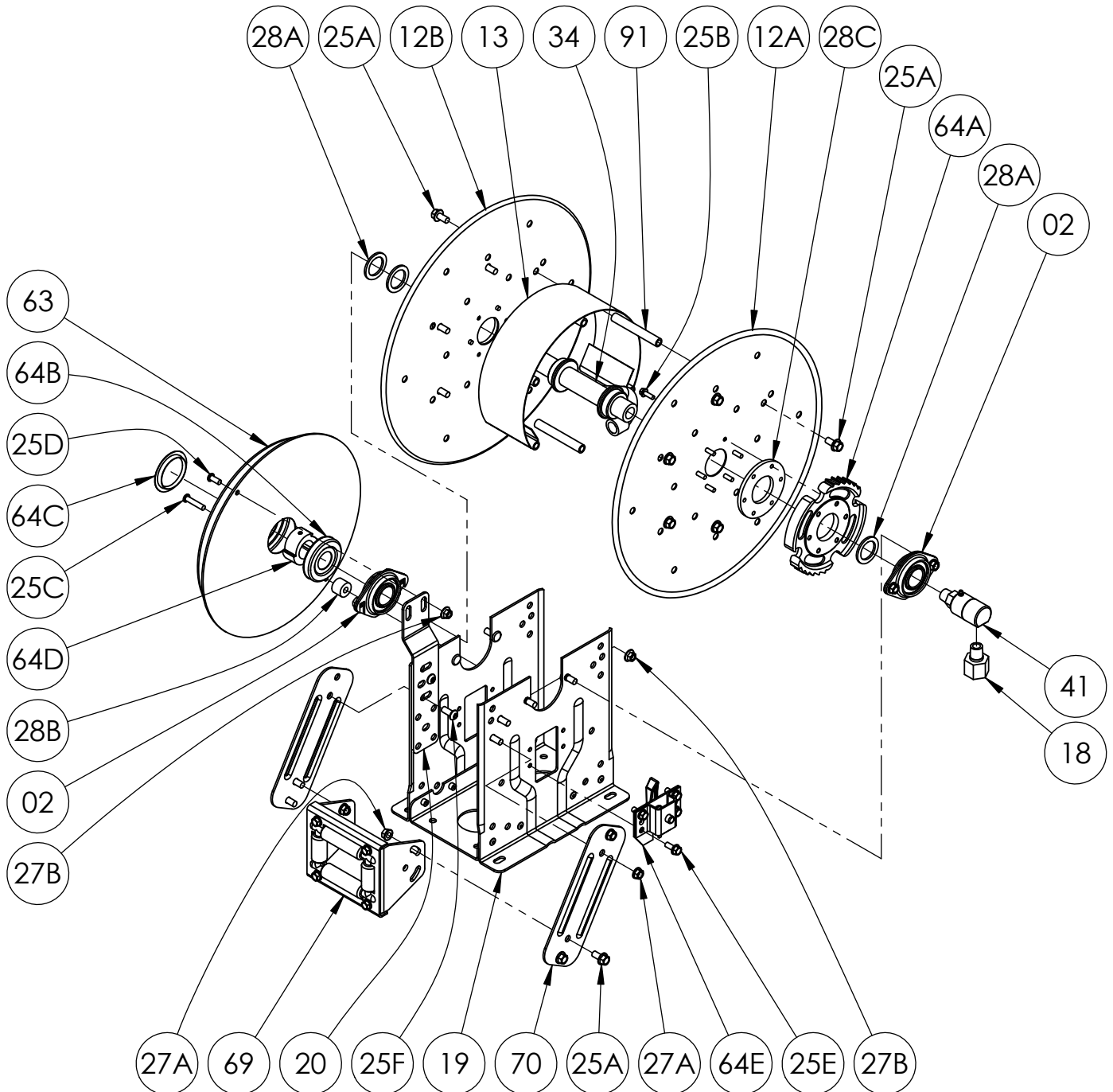
<u>Item No.</u>	<u>Description</u>	<u>Part No.</u>	<u>Qty</u>
02	1" Pipe-Size (1.287" I.D.) Self Aligning Bearing for N-Series Complete (see ISO-210 for parts)...	9902.2600	2
12A	Front Disc (Steel E-Coated)	Specify Model	1
12B	Back Disc w/ Disc Washer (Steel E-Coated) (includes Item 28C).....	Specify Model	1
13	Drum, 10-1/2" Dia. 18 GA 304 SST Wrap-Around (for DEF-450**).....	9905.0138	1
13	Drum, 8" Dia. 18 GA 304 SST Wrap-Around (for DEF-425*) (not shown).....	9905.0128	1
13	Drum, 15-1/2" Dia. 18 GA 304 SST Wrap-Around (for DEF-475***) (not shown).....	9905.0178	1
19	N-Series Spring Reel Frame Assembly for DEF-450**.....	9908.0053	1
19	N-Series Spring Reel Frame Assembly for DEF-425* (not shown)	9908.0050	1
19	N-Series Spring Reel Frame Assembly for DEF-475*** (not shown)	9908.0060	1
20	N-Series Universal Spring Mounting Bracket, per P20A-00280 (for DEF-450** & DEF-475***)	9922.0050	1
25A	3/8"-16 x 3/4" Spinlock Bolt	9904.2201	9, 16 or 24
25B	1/4"-20 x 3/4" Spinlock Bolt (for Ratchet Wheel).....	9904.1060	6
25C	5/16"-18 x 1-1/2" Hex Socket Button Head Cap Screw (for DEF-425* & DEF-450**).....	9904.9104	1 or 2
25D	5/16"-18 x 3/4" Hex Socket Button Head Cap Screw (for DEF-450** only).....	9904.9101	1
25E	5/16"-18 x 3/4" Thread Cutting Hex Head Bolt (for Ratchet Locking Assembly)	9958.0055	4
25F	3/8"-16 x 7/8" Button Socket Head Cap Screw	9904.9201	4
25G	3/8"-16 x 1-1/2" Spinlock Bolt - for Spring Mounting (for DEF-475*** only) (not shown).....	9904.2204	2
25H	3/8"-16 x 3/4" Spinlock Bolt - for Spring Mounting (for DEF-475*** only) (not shown)	9904.2201	2
25J	3/8"-16 x 3/4" Hex Head Cap Screw (for DEF-425* only) (not shown).....	9904.1201	5
27A	3/8"-16 Spinlock Nut.....	9904.6200	8 or 12
27B	5/16"-18 Large Flange Spinlock Nut (for DEF-425* & DEF-450**).....	9904.6100	2
28A	1" Hub Spacer Washer - Plated (1-7/8" O.D. x 1-5/16" I.D. x 1/8" Thick).....	9954.0021	As Req'd.
28B	Spring Mounting Spacer, per P28A-00070 (for DEF-425* & DEF-450**).....	9922.0033	1
28C	EH-936 Disc Washer (E-Coated)	9965.0015	1
28D	Oval Spring Mounting Spacer, per P28A-00020 (for DEF-475*** only) (not shown).....	9922.0032	1
28E	Spring Spacer, per P28A-00760 (1" O.D. x 0.381" I.D. x 1/2" Thick) (for DEF-425* only) (not shown)	9954.0015	1
28F	3/8" Flat Washer Spring Spacer (for DEF-425* only) (not shown)	9954.0007	1
29	Woodruff Key #9 (3/16" x 3/4") for Spring Arbor (not shown)	9916.0080	1
31A	1/2" x 25' Flextral Tru-Blue DEF Hose, 1/2" MNPT x 1/2" MNPT - for DEF-425* (not shown)	9970.1521	1
31A	1/2" x 50' Flextral Tru-Blue DEF Hose, 1/2" MNPT x 1/2" MNPT - for DEF-450** (not shown).....	9970.1523	1
31A	1/2" x 75' Flextral Tru-Blue DEF Hose, 1/2" MNPT x 1/2" MNPT - for DEF-475*** (not shown)	9970.1524	1
31B	HS-35 Single Hose Stop (Specify 0.75" Hose O.D. for Tru-Blue Hose) w/ Hardware (not shown)	9922.0200	1
34	1/2" Welded 304 SST Barstock Hub Assembly (Specify Model and Riser Fitting).....	9901.0634	1
41	1/2" 90 Degree MxF 304 SST 3000 PSI Full Flow Super Swivel Joint (EPDM, for DEF).....	9927.8529	1
63	"J" Spring w/ Arbor (includes Item 64D) (for DEF-450** only).....	9921.0030	1
63	"C" Spring w/ Arbor (includes Item 64D) (for DEF-425* only) (not shown).....	9921.0018	1
63	"B" Spring w/ Arbor (includes Item 64D) (for DEF-475*** only) (not shown)	9921.0015	1
64A	Ratchet Wheel (2 Position) 180 Degree w/ Hardware, per P64A-00120 (includes Item 25B)	9922.0015	1
64B	Cap-Plug for Spring (STP-3) Inner Side.....	9922.0036	1
64C	Low Temp Cap-Plug for Spring (BP-2-1/2) Outer Side.....	9922.0037	1
64D	Spring Arbor, per P64A-00110 (for "C", "B", "G", or "J" Springs).....	9922.0002	1
64E	Right Hand Ratchet Locking Assembly Complete (see ISO-207 for parts)	9922.0312	1
64E	Left Hand Ratchet Locking Assembly Complete (for Reverse Springs only) (see ISO-207 for parts) ..	9922.0311	1
69	N204 Complete Roller Assembly (see ISO-208 for parts)	9939.0111	1
70	N-Series Single Roller Arm, per P70A-03020 (for DEF-450** & DEF-475***) (Specify Model).....	9941.0030	2
70	N-Series Single Roller Arm, per P70A-03010 (for DEF-425* only) (Specify Model) (not shown)...	9941.0031	2
91	4" Long Anodized Aluminum Threaded Spacer Pipe.....	9904.0308	5, 6 or 10

NOTE: New Model Number Conversion Chart as of 3/2023

***DEF-425 – DEF-N716-14-16-8C**

****DEF-450 – DEF-N716-19-20-10.5J**

*****DEF-475 – DEF-N716-25-26-15.5B**



PARTS LIST
ISO 247
DEF-N700 3/4" Series (DEF-625, DEF-650 & DEF-675)

When Ordering Parts
BE SURE TO SPECIFY COMPLETE MODEL NUMBER and SERIAL NUMBER OF REEL
USE PART NUMBER!

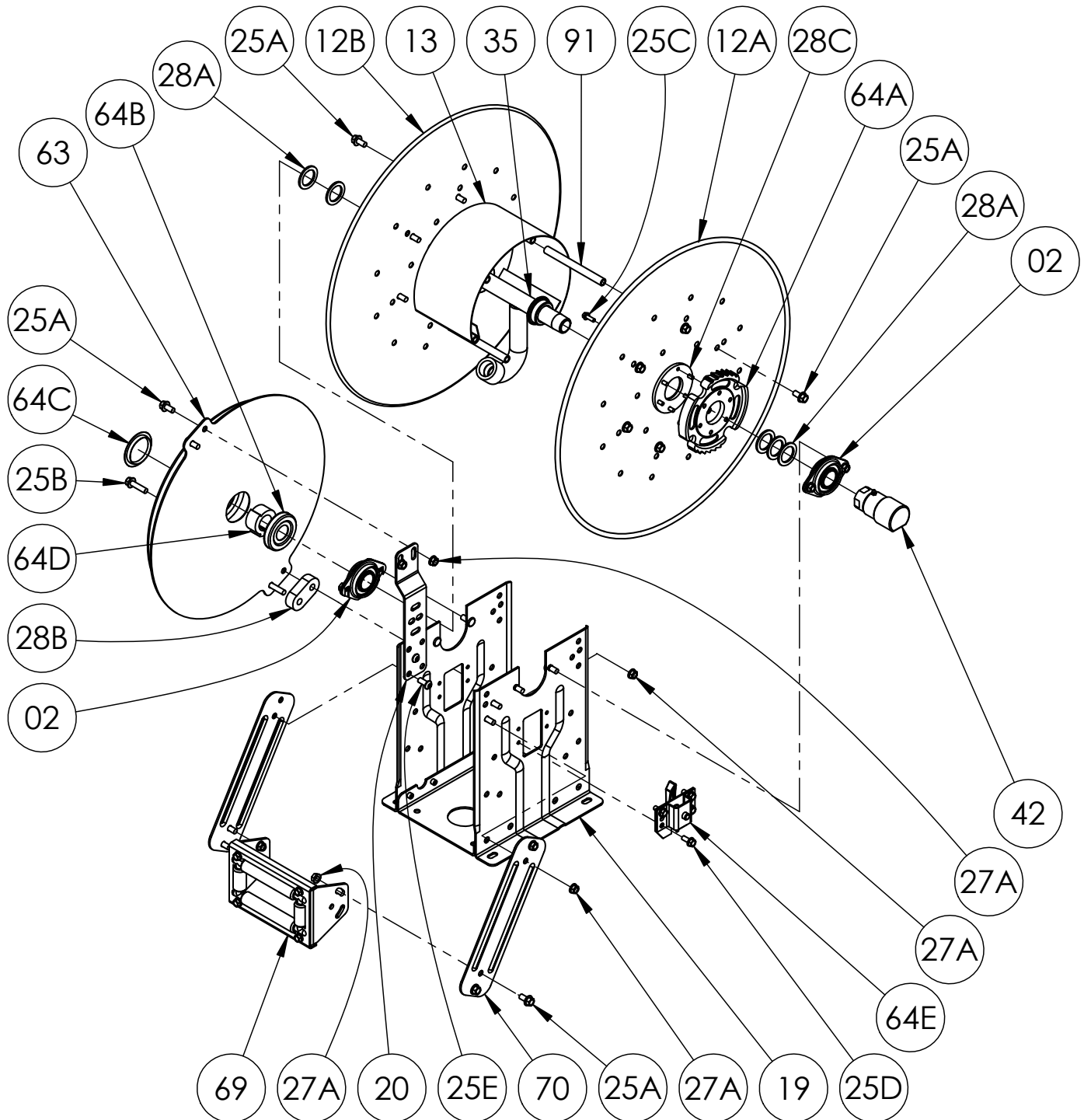
<u>Item No.</u>	<u>Description</u>	<u>Part No.</u>	<u>Qty</u>
02	1" Pipe-Size (1.287" I.D.) Self Aligning Bearing for N-Series Complete (see ISO-210 for parts)...	9902.2600	2
12A	Front Disc (Steel E-Coated)	Specify Model	1
12B	Back Disc w/ Disc Washer (Steel E-Coated) (includes Item 28C).....	Specify Model	1
13	Drum, 10-1/2" Dia. 18 GA 304 SST Wrap-Around (for DEF-625* & DEF-650**)	9905.0138	1
13	Drum, 15-1/2" Dia. 18 GA 304 SST Wrap-Around (for DEF-675*** only) (not shown).....	9905.0178	1
18	1/2" MNPT x 3/4" FNPT 304 SST Adapter	9950.0081	1
19	N-Series Spring Reel Frame Assembly for DEF-625*	9908.0053	1
19	N-Series Spring Reel Frame Assembly for DEF-650** (not shown).....	9908.0056	1
19	N-Series Spring Reel Frame Assembly for DEF-675*** (not shown)	9908.0060	1
20	N-Series Universal Spring Mounting Bracket, per P20A-00280	9922.0050	1
25A	3/8"-16 x 3/4" Spinlock Bolt	9904.2201	16 or 24
25B	1/4"-20 x 3/4" Hex Head Spinlock Cap Screw (for Ratchet Wheel).....	9904.1060	6
25C	5/16"-18 x 1-1/2" Hex Socket Button Head Cap Screw (for DEF-625* & DEF-650**)	9904.9104	1
25D	5/16"-18 x 3/4" Hex Socket Button Head Cap Screw (for DEF-625* & DEF-650**)	9904.9101	1
25E	5/16"-18 x 3/4" Thread Cutting Hex Head Bolt (for Ratchet Locking Assembly)	9958.0055	4
25F	3/8"-16 x 7/8" Button Socket Head Cap Screw	9904.9201	4
25G	3/8"-16 x 1-1/2" Spinlock Bolt - for Spring Mounting (for DEF-675*** only) (not shown).....	9904.2204	2
25H	3/8"-16 x 3/4" Spinlock Bolt - for Spring Mounting (for DEF-675*** only) (not shown).....	9904.2201	2
27A	3/8"-16 Spinlock Nut.....	9904.6200	8 or 12
27B	5/16"-18 Large Flange Spinlock Nut (for DEF-625* & DEF-650**)	9904.6100	2
28A	1" Hub Spacer Washer - Plated (1-7/8" O.D. x 1-5/16" I.D. x 1/8" Thick).....	9954.0021	As Req'd.
28B	Spring Mounting Spacer, per P28A-00070 (for DEF-625* & DEF-650**)	9922.0033	1
28C	EH-936 Disc Washer (E-Coated)	9965.0015	1
28D	Oval Spring Mounting Spacer, per P28A-00020 (for DEF-675*** only) (not shown).....	9922.0032	1
29	Woodruff Key #9 (3/16" x 3/4") for Spring Arbor (not shown)	9916.0080	1
31A	3/4" x 25' Flextral Tru-Blue DEF Hose, 3/4" MNPT x 3/4" MNPT - for DEF-625* (not shown)	9970.1501	1
31A	3/4" x 50' Flextral Tru-Blue DEF Hose, 3/4" MNPT x 3/4" MNPT - for DEF-650** (not shown).....	9970.1503	1
31A	3/4" x 75' Flextral Tru-Blue DEF Hose, 3/4" MNPT x 3/4" MNPT - for DEF-675*** (not shown)	9970.1504	1
31B	HS-35 Single Hose Stop (Specify 1.03" Hose O.D. for Tru-Blue Hose) w/ Hardware (not shown)...	9922.0200	1
34	1/2" Welded 304 SST Barstock Hub Assembly (Specify Model and Riser Fitting).....	9901.0634	1
41	1/2" 90 Degree MxF 304 SST 3000 PSI Full Flow Super Swivel Joint (EPDM, for DEF).....	9927.8529	1
63	"J" Spring w/ Arbor (includes Item 64D) (for DEF-625* & DEF-650**)	9921.0030	1
63	"B" Spring w/ Arbor (includes Item 64D) (for DEF-675*** only) (not shown)	9921.0015	1
64A	Ratchet Wheel (2 Position) 180 Degree w/ Hardware, per P64A-00120 (includes Item 25B)	9922.0015	1
64B	Cap-Plug for Spring (STP-3) Inner Side	9922.0036	1
64C	Low Temp Cap-Plug for Spring (BP-2-1/2) Outer Side	9922.0037	1
64D	Spring Arbor, per P64A-00110 (for "C", "B", "G", or "J" Springs).....	9922.0002	1
64E	Right Hand Ratchet Locking Assembly Complete (see ISO-207 for parts)	9922.0312	1
64E	Left Hand Ratchet Locking Assembly Complete (for Reverse Springs only) (see ISO-207 for parts)	9922.0311	1
69	N204 Complete Roller Assembly (for DEF-625* & DEF-650**) (see ISO-208 for parts).....	9939.0111	1
69	N206 Complete Roller Assembly (for DEF-675*** only) (see ISO-208 for parts) (not shown)	9939.0113	1
70	N-Series Single Roller Arm, per P70A-03020 (Specify Model).....	9941.0030	2
91	4" Long Anodized Aluminum Threaded Spacer Pipe (for DEF-625* & DEF-650**)	9904.0308	6
91	6" Long Anodized Aluminum Threaded Spacer Pipe (for DEF-675*** only) (not shown).....	9904.0312	10

NOTE: New Model Number Conversion Chart as of 3/2023

***DEF-625 – DEF-N716-19-20-10.5J**

****DEF-650 – DEF-N716-23 -24-10.5J**

*****DEF-675 – DEF-N718-25-26-15.5B**



PARTS LIST
ISO 248
DEF-N800 1" Series (DEF-825 & DEF-850)

When Ordering Parts
BE SURE TO SPECIFY COMPLETE MODEL NUMBER and SERIAL NUMBER OF REEL
USE PART NUMBER!

<u>Item No.</u>	<u>Description</u>	<u>Part No.</u>	<u>Qty</u>
02	1" Pipe-Size (1.287" I.D.) Self Aligning Bearing for N-Series Complete (see ISO-210 for parts)...	9902.2600	2
12A	Front Disc (Steel E-Coated)	Specify Model	1
12B	Back Disc w/ Disc Washer (Steel E-Coated) (includes Item 28C).....	Specify Model	1
13	Drum, 10-1/2" Dia. 18 GA 304 SST Wrap-Around (Specify Model).....	9905.0138	1
19	N-Series Spring Reel Frame Assembly for DEF-850**	9908.0060	1
19	N-Series Spring Reel Frame Assembly for DEF-825* (not shown)	9908.0056	1
20	N-Series Universal Spring Mounting Bracket, per P20A-00280	9922.0050	1
25A	3/8"-16 x 3/4" Spinlock Bolt	9904.2201	16 or 18
25B	3/8"-16 x 1-1/2" Spinlock Bolt (for DEF-850** only)	9904.2204	2
25C	1/4"-20 x 3/4" Hex Head Spinlock Cap Screw (for Ratchet Wheel).....	9904.1060	6
25D	5/16"-18 x 3/4" Thread Cutting Hex Head Bolt (for Ratchet Locking Assembly)	9958.0055	4
25E	3/8"-16 x 7/8" Button Socket Head Cap Screw	9904.9201	4
25F	5/16"-18 x 1-1/2" Hex Socket Button Head Cap Screw (for DEF-825* only) (not shown)	9904.9104	1
25G	5/16"-18 x 3/4" Hex Socket Button Head Cap Screw (for DEF-825* only) (not shown)	9904.9101	1
27A	3/8"-16 Spinlock Nut.....	9904.6200	8 or 12
27B	5/16"-18 Large Flange Spinlock Nut (for DEF-825* only) (not shown).....	9904.6100	2
28A	1" Hub Spacer Washer - Plated (1-7/8" O.D. x 1-5/16" I.D. x 1/8" Thick).....	9954.0021	As Req'd.
28B	Oval Spring Mounting Spacer, per P28A-00020 (for DEF-850** only)	9922.0032	1
28C	EH-936 Disc Washer (E-Coated)	9965.0015	1
28D	Spring Mounting Spacer, per P28A-00070 (for DEF-825* only) (not shown)	9922.0033	1
29	Woodruff Key #9 (3/16" x 3/4") for Spring Arbor (not shown)	9916.0080	1
31A	1" x 25' Flextral Tru-Blue DEF Hose, 1" MNPT x 1" MNPT - for DEF-825* (not shown)	9970.1511	1
31A	1" x 50' Flextral Tru-Blue DEF Hose, 1" MNPT x 1" MNPT - for DEF-850** (not shown).....	9970.1513	1
31B	HS-35 Single Hose Stop (Specify 1.38" Hose O.D. for Tru-Blue Hose) w/ Hardware (not shown)	9922.0200	1
35	1" 304 SST Hub Assembly (Specify Model/Serial # and Riser Fitting).....	9901.1604	1
42	1" 90 Degree FxF 304 SST 2000 PSI Full Flow Super Swivel Joint (EPDM, for DEF)	9929.8529	1
63	"B" Spring w/ Arbor (includes Item 64D) (for DEF-850** only)	9921.0015	1
63	"J" Spring w/ Arbor (includes Item 64D) (for DEF-825* only) (not shown).....	9921.0030	1
64A	Ratchet Wheel (2 Position) 180 Degree w/ Hardware, per P64A-00120 (includes Item 25B)	9922.0015	1
64B	Cap-Plug for Spring (STP-3) Inner Side	9922.0036	1
64C	Low Temp Cap-Plug for Spring (BP-2-1/2) Outer Side	9922.0037	1
64D	Spring Arbor, per P64A-00110 (for "C", "B", "G", or "J" Springs).....	9922.0002	1
64E	Right Hand Ratchet Locking Assembly Complete (see ISO-207 for parts)	9922.0312	1
64E	Left Hand Ratchet Locking Assembly Complete (for Reverse Springs only) (see ISO-207 for parts).....	9922.0311	1
69	N206 Complete Roller Assembly (for DEF-850** only) (see ISO-208 for parts).....	9939.0113	1
69	N204 Complete Roller Assembly (for DEF-825* only) (see ISO-208 for parts) (not shown)	9939.0111	1
70	N-Series Single Roller Arm, per P70A-03020 (Specify Model).....	9941.0030	2
91	6" Long Anodized Aluminum Threaded Spacer Pipe (for DEF-850** only)	9904.0312	6
91	4" Long Anodized Aluminum Threaded Spacer Pipe (for DEF-825* only) (not shown).....	9904.0308	6

NOTE: New Model Number Conversion Chart as of 3/2023

***DEF-825 – DEF-N816-23-24-10.5J**

****DEF-850 – DEF-N818-25-26-10.5B**